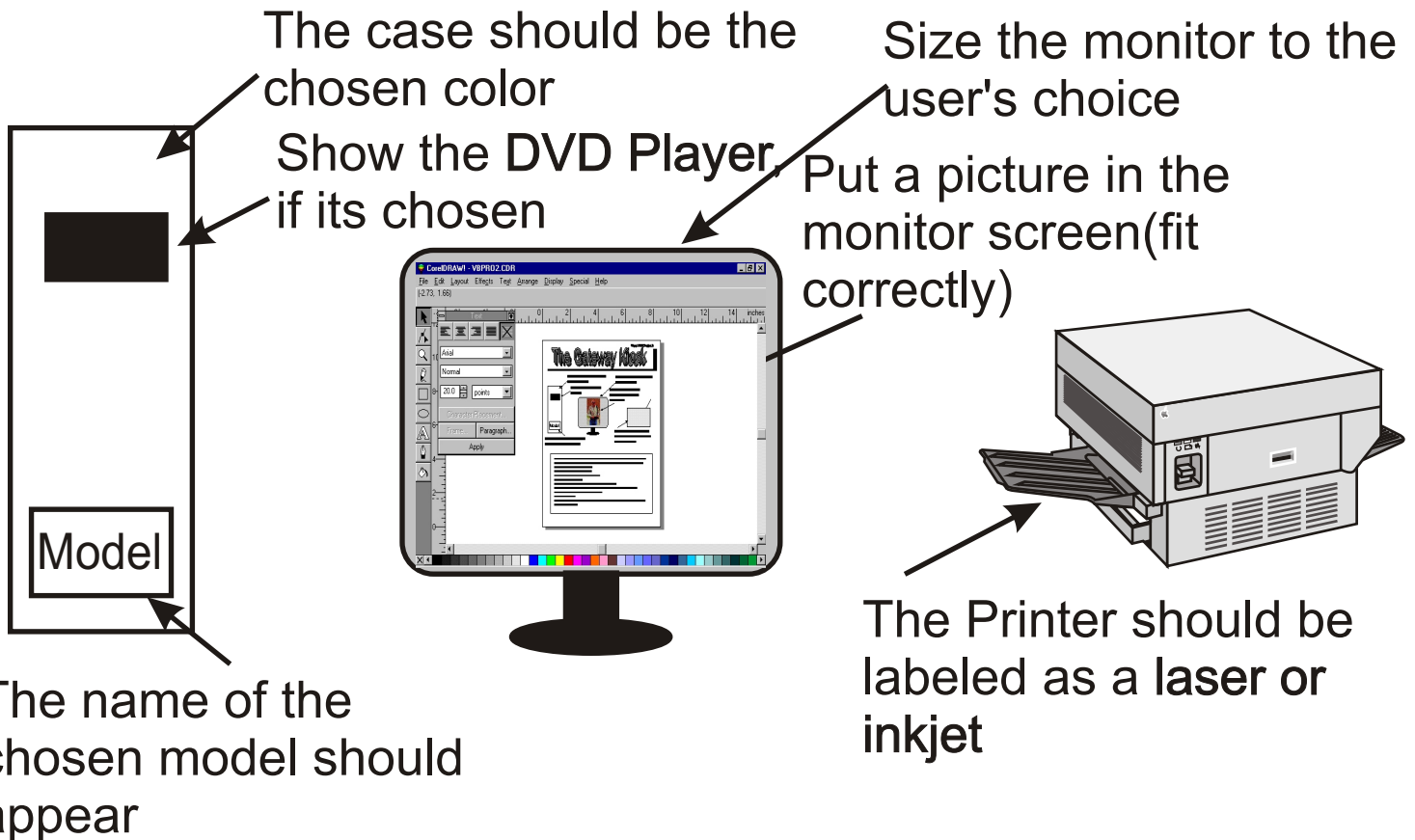


The Gateway Kiosk



Customers at Gateway can choose to purchase a customized computer. They would use a kiosk to enter the order into the computer. You are to create a program which allows them to make their choices, and shows what their computer will look like, as well as the cost. You decide how the form will look, but the user must be able to experiment with their choices.

Choices the user must make

(you decide which controls to use. Make use of radio buttons, check boxes, and combo boxes.)

DVD Player - yes (\$139) or no

CD Player - yes(\$49) or no

Monitor size - 13"(\$150), 15"(\$220), 17"(\$300)

Model - Z80(\$420), 6502(\$555), 8088(\$1040), p4-2gh(\$1200)

Case Color - red, blue, green, yellow

Printer yes or no

If yes printer, type of printer - Ink Jet (\$120) or Laser (\$600)